

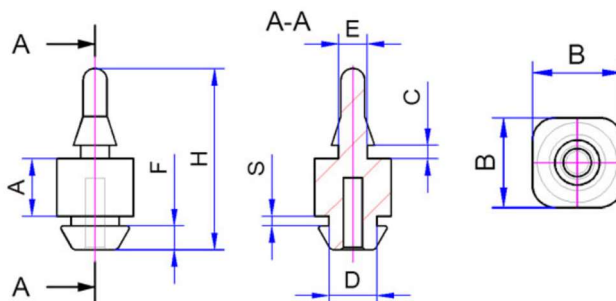


PLUG-IN PCB MOUNTING ELEMENTS / SES SERIES



FEATURES:

- Material: TPE (thermoplastic elastomer).
- Hardness Range: Approximately 65 Shore A
- Temperature Range: -40 to 100°C.
- Flammability Rating: UL 94-V-0.



Ordering Information	SES Part	16 PCB Thickness	50 Distance Size (A) in 1/10mm	30 or 40 Bores: 30 = 3-3.5mm 20 = 1.5-2.5mm	10 or 20 Plate Thickness: 10 = 0.75-1.25mm 20 = 1.5-2.5mm
----------------------	----------	------------------	--------------------------------	--	--

Part No.	A (mm)	B (mm)	C (mm)	D (mm)	E (mm)	F (mm)	H (mm)	S (mm)
SES-16-50-30-10	5	8	1.4	5	3	2.5	17.9	1
SES-16-50-30-20	5	8	1.4	5	3	2.5	18.9	2
SES-16-50-40-10	5	8	1.4	5	4	2.5	18.9	1
SES-16-50-40-20	5	8	1.4	5	4	2.5	19.9	2
SES-16-60-30-10	6	8	1.4	5	3	2.5	18.9	1
SES-16-60-30-20	6	8	1.4	5	3	2.5	19.9	2
SES-16-60-40-10	6	8	1.4	5	4	2.5	19.9	1
SES-16-60-40-20	6	8	1.4	5	4	2.5	20.9	2
SES-16-80-30-10	8	8	1.4	5	3	2.5	20.9	1
SES-16-80-30-20	8	8	1.4	5	3	2.5	21.9	2
SES-16-80-40-10	8	8	1.4	5	4	2.5	21.9	1
SES-16-80-40-20	8	8	1.4	5	4	2.5	22.9	2
SES-16-100-30-10	10	8	1.4	5	3	2.5	22.9	1
SES-16-100-30-20	10	8	1.4	5	3	2.5	23.9	2
SES-16-100-40-10	10	8	1.4	5	4	2.5	23.9	1
SES-16-100-40-20	10	8	1.4	5	4	2.5	24.9	2

Gelmecc UK

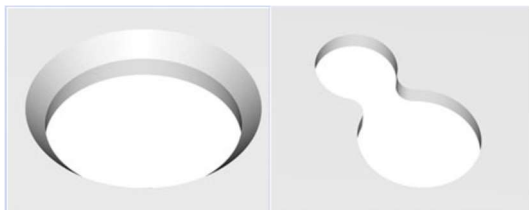
Marcom House, 1-2 Steam Mill Lane, Great Yarmouth, Norfolk, NR31 0HP

Telephone: +44(0) 1493 668622

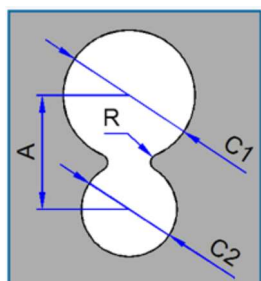
Email: sales@gelmecc.co.uk Website: www.gelmecc.co.uk



PLUG-IN PCB MOUNTING ELEMENTS / SES SERIES



PCB elements with a plug-in foot can be inserted through a slightly countersunk 5.5mm hole in the mounting plate, or inserted through the larger hole in a figure-eight shaped spout, and then pulled into the hole.



The size of the radius (r) and dimension A can be used to determine the force that is required to assemble or disassemble the PCB mount.

Cut-out dimensions (mm)			
A	C1	C2	R
6.5	7.5	5.2	1.0

Gelmecc UK

Marcom House, 1-2 Steam Mill Lane, Great Yarmouth, Norfolk, NR31 0HP

Telephone: +44(0) 1493 668622

Email: sales@gelmecc.co.uk Website: www.gelmecc.co.uk