

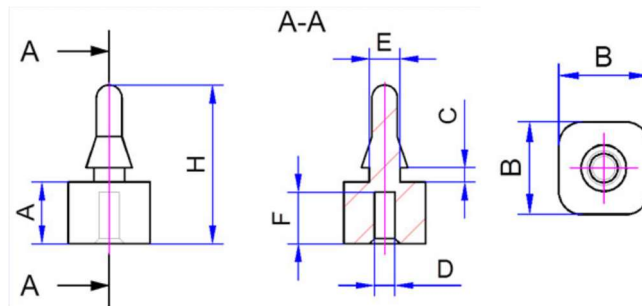


## PCB MOUNTING ELEMENTS WITH HOLE / SEB SERIES



### FEATURES:

- Material: TPE (thermoplastic elastomer).
- Hardness Range: Approximately 65 Shore A
- Temperature Range: -40 to 100°C.
- Flammability Rating: UL 94-V-0.



Ordering Information	SEB	16	20	30 or 40
	Part	PCB Thickness	Distance Size (A) in 1/10mm	Bores: 30 = 3 - 3.5mm 40 = 4 - 4.5mm

Part No.	A (mm)	B (mm)	C (mm)	D (mm)	E (mm)	F (mm)	G (mm)
SEB-16-60-30	6	8	1.4	2	3	5	15.4
SEB-16-60-40	6	8	1.4	2	4	5	16.4
SEB-16-80-30	8	8	1.4	2	3	5	17.4
SEB-16-80-40	8	8	1.4	2	4	5	18.4
SEB-16-100-30	10	8	1.4	2	3	5	19.4
SEB-16-100-40	1	8	1.4	2	4	5	20.4



The PCB mount are fixed into place via a 3x6mm bolt (with or without thread) by pressing into the mounting plate.

### Gelmecc UK

Marcom House, 1-2 Steam Mill Lane, Great Yarmouth, Norfolk, NR31 0HP

Telephone: +44(0) 1493 668622

Email: sales@gelmecc.co.uk Website: www.gelmecc.co.uk