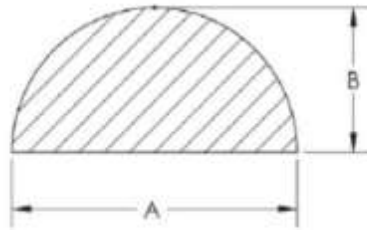


## SORBOTHANE HEMISPHERES WITH PSA (METRIC)



- Quick, cost-effective method of isolating equipment.
- Simply place the hemisphere under the unit to be isolated.
- 20-30% deflection when statically loaded.
- Weight range from 0.02kg to 36kg per hemisphere.
- PSA provides dimensional stability and improved handling.
- PSA has exceptional temperature and chemical resistance as well as superior bonding strength.
- Special tack reducing urethane coating available upon request.
- Typical applications include audio equipment, video components, computers, sensitive test instruments and small machinery.
- ROHS and REACH SVHC compliant

**AVAILABLE TO PURCHASE THROUGH DIGIKEY – [CLICK HERE](#)**



Part Number	A	B	Duro (Shore 00)	Rated Load (kg)	Engineering Drawing
0510026-30-10	6.4	3.2	30	0.02 ~ 0.03	<a href="#">PDF</a>
0510026-50-10	6.4	3.2	50	0.024 ~ 0.06	<a href="#">PDF</a>
0510026-70-10	6.4	3.2	70	0.08 ~ 0.16	<a href="#">PDF</a>
0510101-30-10	12.7	6.4	30	0.09 ~ 0.23	<a href="#">PDF</a>
0510101-50-10	12.7	6.4	50	0.14 ~ 0.32	<a href="#">PDF</a>
0510101-70-10	12.7	6.4	70	0.23 ~ 0.54	<a href="#">PDF</a>
0510111-30-10	19.1	9.5	30	0.23 ~ 0.41	<a href="#">PDF</a>
0510111-50-10	19.1	9.5	50	0.45 ~ 0.82	<a href="#">PDF</a>
0510111-70-10	19.1	9.5	70	0.82 ~ 1.63	<a href="#">PDF</a>
0510116-30-10	25.4	12.7	30	0.45 ~ 0.91	<a href="#">PDF</a>
0510116-50-10	25.4	12.7	50	0.91 ~ 1.81	<a href="#">PDF</a>
0510116-70-10	25.4	12.7	70	1.81 ~ 3.63	<a href="#">PDF</a>
0510121-30-10	31.8	15.9	30	0.91 ~ 1.81	<a href="#">PDF</a>
0510121-50-10	31.8	15.9	50	2.27 ~ 4.54	<a href="#">PDF</a>
0510121-70-10	31.8	15.9	70	6.80 ~ 9.98	<a href="#">PDF</a>
0510131-30-10	38.1	19.1	30	1.81 ~ 3.18	<a href="#">PDF</a>
0510131-50-10	38.1	19.1	50	3.18 ~ 6.35	<a href="#">PDF</a>

0510131-70-10	38.1	19.1	70	6.35 ~ 13.61	<a href="#">PDF</a>
0510136-30-10	44.4	22.2	30	3.18 ~ 5.44	<a href="#">PDF</a>
0510136-50-10	44.4	22.2	50	5.44 ~ 8.62	<a href="#">PDF</a>
0510136-70-10	44.4	22.2	70	6.80 ~ 12.25	<a href="#">PDF</a>
0510141-30-10	50.8	25.4	30	4.99 ~ 7.26	<a href="#">PDF</a>
0510141-50-10	50.8	25.4	50	7.71 ~ 10.89	<a href="#">PDF</a>
0510141-70-10	50.8	25.4	70	11.34 ~ 17.24	<a href="#">PDF</a>
0510161-30-10	57.2	28.6	30	8.16 ~ 11.79	<a href="#">PDF</a>
0510161-50-10	57.2	28.6	50	14.06 ~ 19.06	<a href="#">PDF</a>
0510161-70-10	57.2	28.6	70	17.24 ~ 23.59	<a href="#">PDF</a>
0510151-30-10	63.5	31.8	30	11.34 ~ 15.89	<a href="#">PDF</a>
0510151-50-10	63.5	31.8	50	20.41 ~ 27.22	<a href="#">PDF</a>
0510151-70-10	63.5	31.8	70	27.22 ~ 36.29	<a href="#">PDF</a>

Dimensions in mm

### Datasheet Links

- [MATERIAL PROPERTIES](#)
- [PERFORMANCE DATA](#)
- [WHAT IS SORBOTHANE?](#)
- [IMPERIAL MEASUREMENTS](#)