

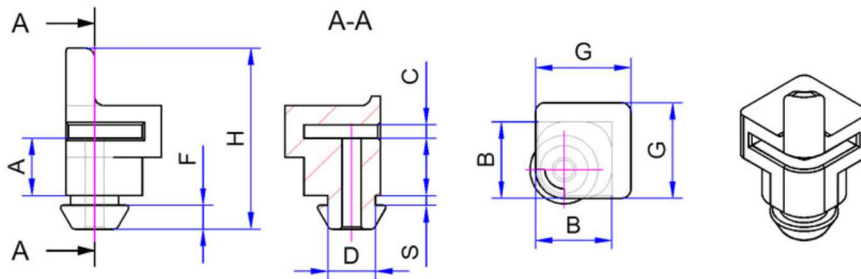


PCB MOUNTING ELEMENTS WITH PLUG-IN FOOT / EES SERIES



FEATURES:

- Material: TPE (thermoplastic elastomer).
- Hardness Range: Approximately 65 Shore A
- Temperature Range: -40 to 100°C.
- Flammability Rating: UL 94-V-0.



Ordering Information	EES	16	60	10 or 20
	Part	PCB Thickness	Distance Size (A) in 1/10mm	10 = for plate thickness from 0.75 – 1.25 mm. 20 = for plate thickness from 1.50 – 2.50 mm.

Part No.	A (mm)	B (mm)	C (mm)	D (mm)	F (mm)	G (mm)	H (mm)	S (mm)
EES-16-50-10	5	8	1.4	5	2.5	10	17.9	1.0
ESS-16-60-20	5	8	1.4	5	2.5	10	18.9	2.0
EES-16-60-10	6	8	1.4	5	2.5	10	18.9	1.0
EES-16-60-20	6	8	1.4	5	2.5	10	19.9	2.0
EES-16-80-10	8	8	1.4	5	2.5	10	20.9	1.0
EES-16-80-20	8	8	1.4	5	2.5	10	21.9	2.0
EES-16-100-10	10	8	1.4	5	2.5	10	22.9	1.0
EES-16-100-200	10	8	1.4	5	2.2	10	23.9	2.0

Gelmecc UK

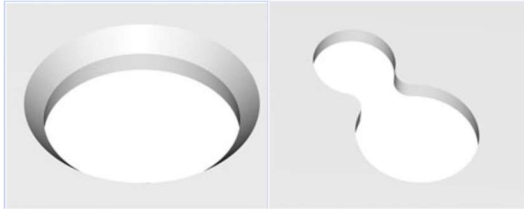
Marcom House, 1-2 Steam Mill Lane, Great Yarmouth, Norfolk, NR31 0HP

Telephone: +44(0) 1493 668622

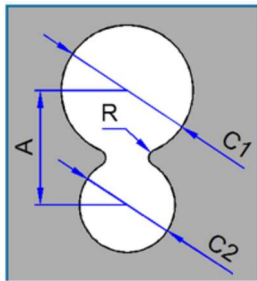
Email: sales@gelmecc.co.uk Website: www.gelmecc.co.uk



PCB MOUNTING ELEMENTS WITH PLUG-IN FOOT / EES SERIES



PCB elements with a plug-in foot can be inserted through a slightly countersunk 5.5mm hole in the mounting plate, or inserted through the larger hole in a figure-eight shaped spout, and then pulled into the hole.



The size of the radius (r) and dimension A can be used to determine the force that is required to assemble or disassemble the PCB mount.

Cut-out dimensions (mm)			
A	C1	C2	R
6.5	7.5	5.2	1.0

Gelmecc UK

Marcom House, 1-2 Steam Mill Lane, Great Yarmouth, Norfolk, NR31 0HP

Telephone: +44(0) 1493 668622

Email: sales@gelmecc.co.uk Website: www.gelmecc.co.uk