

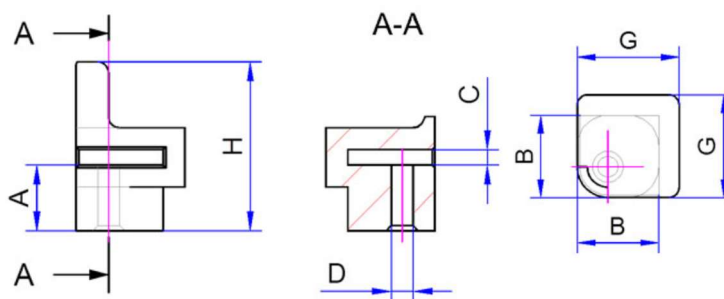


PCB MOUNTING ELEMENTS WITH HOLE / EEB SERIES



FEATURES:

- Material: TPE (thermoplastic elastomer).
- Hardness Range: Approximately 65 Shore A
- Temperature Range: -40 to 100°C.
- Flammability Rating: UL 94-V-0.



Ordering Information	EEB	16	60
	Part	PCB Thickness	Distance Size (A) in 1/10mm

Part No.	A (mm)	B (mm)	C (mm)	D (mm)	G (mm)	H (mm)
EEB-16-50	5	8	1.4	2	10	14.4
EEB-16-60	6	8	1.4	2	10	15.4
EEB-16-80	8	8	1.4	2	10	17.4
EEB-16-100	10	8	1.4	2	10	19.4



The PCB mount are fixed into place via a 3x6mm bolt (with or without thread) by pressing into the mounting plate.

Gelmecc UK

Marcom House, 1-2 Steam Mill Lane, Great Yarmouth, Norfolk, NR31 0HP

Telephone: +44(0) 1493 668622

Email: sales@gelmecc.co.uk Website: www.gelmecc.co.uk