

# ONBOARD CONTACT

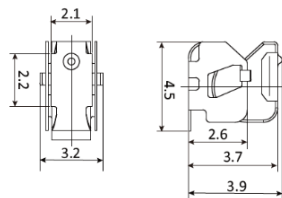
## Kitagawa series: OG-453239-A



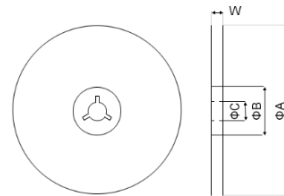
- SMD contact for engine compartment PCB.
- Creates ground connection to release static electricity.
- Spring structure has durability for ten million vibrations.
- Sustained conduction is secured due to dimple design.
- Can be used continuously at temperature limit of 150°C.



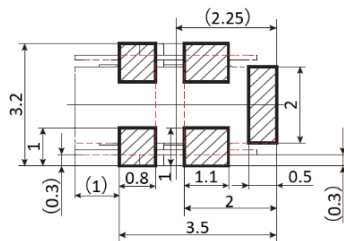
Dimensions (mm)



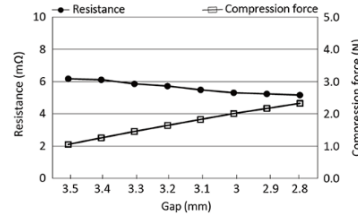
Reel Dimensions (mm)



Pad and Mask Dimensions (mm)

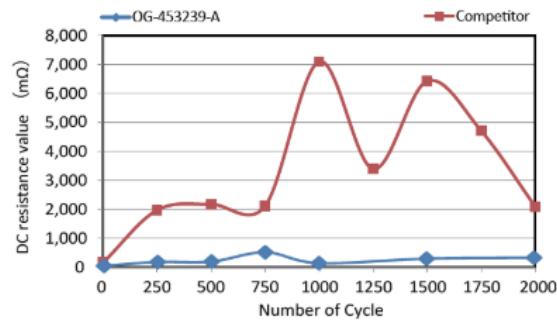


Compression Force vs Electric Resistance



OG-453239-A	
Material	Beryllium Copper (t0.12mm)
Applicable Thickness (mm)	2.8 ~ 3.5
Surface Treatment	Sn reflow plating (Primary plating Cu)
Operating Temperature (° C)	-40 ~ 150
Reel Quantity	2000pcs

Heat Shock Test	
Temperature Switch	-40°C/150°C (0.5 hour each)
Number of cycles	2000
Metal Plate	Aluminium (ADC 12)
Test Method	Sample is compressed by metal plate while heat is applied.



Compression Test	
Defection	H = 2.8 ~ 3.2mm
Compression Count	10 million times
Compression Speed	100 times/sec
Test Method	Height measured and visual check after compressed 2.8 to 3.2mm, for 10 million times

Item	Before	After
External Status		
Height (mm)	3.913	3.902
Recovery Rate	-	99.7

For engineering drawings, 3D files or additional test data please contact our [sales team](#).

**ANNOTATION**

All specifications shown herein are typical values and are not guaranteed. It is recommended to test in the application for suitability.