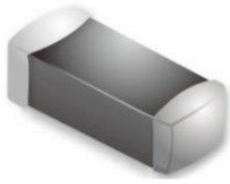


FERRITE CHIP BEADS

MEC series: MFB

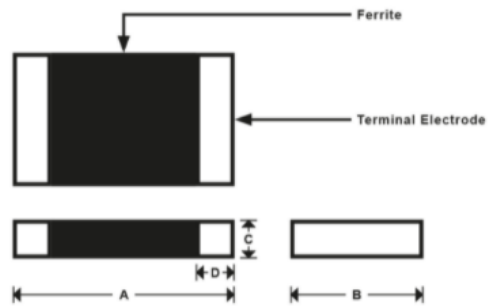


- Excellent solderability and heat resistance.
- Noise attenuated when fitted to circuit with noise.
- Monolithic structure provides high reliability.
- Impedance Range: 30-1000ohm
- Current Range: 1000-6000ma.
- Typical applications include automotive, communication devices, industrial machines, medical devices and energy management systems.

Temperature Range: -40°C ~ +125°C

Part Number	Impedance (Ω) @100MHz \pm 25%	DCR (Ω) Max	Rated Current (ma) (Max)	Reel Quantity	Engineering Spec
MFB-060303-0040AA	40	0.3	300	15000pcs	PDF
MFB-060303-0050AB	50	0.3	300	15000pcs	PDF
MFB-060303-0060AC	60	0.35	300	15000pcs	PDF
MFB-060303-0070AD	70	0.35	300	15000pcs	PDF
MFB-060303-0120AE	120	0.45	200	15000pcs	PDF
MFB-060303-0150AF	150	0.5	200	15000pcs	PDF
MFB-060303-0220AG	220	0.75	200	15000pcs	PDF
MFB-060303-0300AH	300	0.9	150	15000pcs	PDF
MFB-100505-0010AA	10	0.05	500	10000pcs	PDF
MFB-100505-0030AB	30	0.20	300	10000pcs	PDF
MFB-100505-0060AC	60	0.40	200	10000pcs	PDF
MFB-100505-0080AD	80	0.40	200	10000pcs	PDF
MFB-100505-0120AE	120	0.50	200	10000pcs	PDF
MFB-100505-0220AF	220	0.70	100	10000pcs	PDF
MFB-100505-0300AG	300	0.75	100	10000pcs	PDF
MFB-100505-0470AH	470	0.90	100	10000pcs	PDF
MFB-100505-0600AI	600	1.1	50	10000pcs	PDF
MFB-100505-1000AJ	1000	1.5	50	10000pcs	PDF
MFB-160808-0031AA	31	0.1	400	4000pcs	PDF
MFB-160808-0060AB	60	0.15	400	4000pcs	PDF
MFB-160808-0080AC	80	0.15	400	4000pcs	PDF
MFB-160808-0100AD	100	0.15	400	4000pcs	PDF
MFB-160808-0120AE	120	0.15	400	4000pcs	PDF
MFB-160808-0150AF	150	0.15	400	4000pcs	PDF
MFB-160808-0180AG	180	0.20	400	4000pcs	PDF
MFB-160808-0220AH	220	0.20	400	4000pcs	PDF
MFB-160808-0300AI	300	0.30	400	4000pcs	PDF
MFB-160808-0600AJ	600	0.35	400	4000pcs	PDF
MFB-160808-1000AK	1000	0.55	300	4000pcs	PDF
MFB-160808-1500AL	1500	0.60	200	4000pcs	PDF

Shape and Dimensions



Unit: mm

Size Code	A	B	C	D	Reel Quantity
060303 (0201)	0.6±0.03	0.3±0.03	0.3±0.03	0.1 ~ 0.2	15000
100505 (0402)	1.0±0.05	0.5±0.05	0.5±0.05	0.1 ~ 0.3	10000
160808 (0603)	1.60±0.2	0.80±0.2	0.80±0.2	0.30±0.2	4000
201209 (0805)	2.00±0.2	1.20±0.2	0.90±0.2	0.50±0.3	4000
321611 (1206)	3.20±0.2	1.60±0.2	1.10±0.2	0.50±0.3	3000