

# FLEXIBLE INSULATING BUSHING

Kitagawa series: KG



- Protects cables from sharp panel edges.
- Flexibility allows installation on wide variety of shaped holes.
- Insertion mounting.
- Custom lengths available.

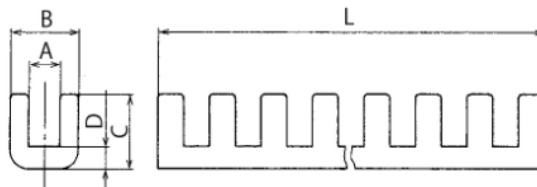


**Material:** Nylon 66 (Colour: Natural)

Flammability: KG-008 - KG-032: UL 94-V-2, KG-045 – KG-132: UL 94-HB

Part Number	Panel Thickness	A	B	C	D	L	Pack Quantity
KG-008	0.8 ± 0.1	0.9	2.9	4.0	1.2	250.6	100pcs
KG-010	1.0 ± 0.1	1.1	3.1	4.0	1.2	250.6	100pcs
KG-012-2	1.2 ± 0.1	1.3	3.3	4.0	1.2	250.6	100pcs
KG-016	1.6 ± 0.1	1.7	3.7	4.0	1.2	250.6	100pcs
KG-024	2.4 ± 0.1	2.4	4.4	4.0	1.2	250.6	100pcs
KG-032	3.2 ± 0.1	3.4	5.5	4.0	1.2	250.6	100pcs
KG-045	4.9 ± 0.1	5.0	8.2	6.0	2.0	320.0	100pcs
KG-062	6.4 ± 0.1	6.5	9.7	6.0	2.0	320.0	100pcs
KG-082	8.1 ± 0.1	8.2	11.4	6.5	2.0	320.0	100pcs
KG-107	10.6 ± 0.1	10.7	13.9	6.5	2.0	320.0	100pcs
KG-132	13.1 ± 0.1	13.2	16.4	6.5	2.0	320.0	100pcs

Dimensions in mm



For engineering drawings, 3D files or additional test data please contact our [sales team](#).

## ANNOTATION

All specifications shown herein are typical values and are not guaranteed. It is recommended to test in the application for suitability.