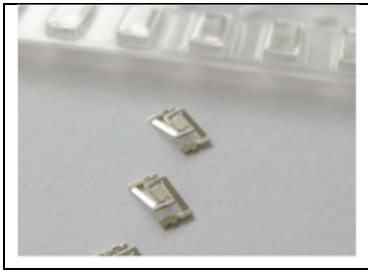


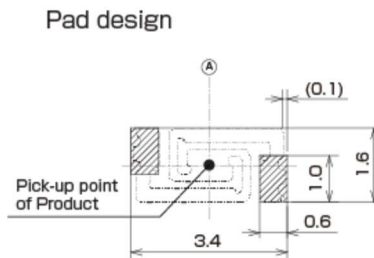
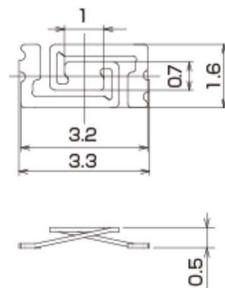
SMD SPRING CONTACT

Kitagawa series: OG-321605



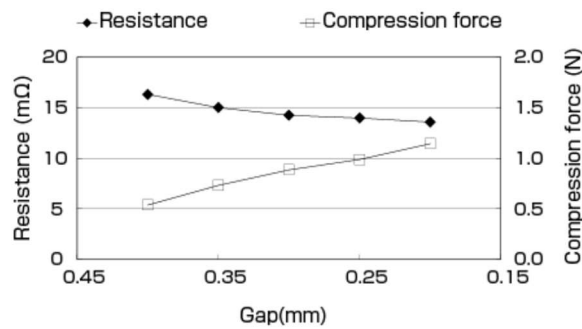
- High resilience.
- Suitable for use with flat designs.
- Fits spaces up to 0.35mm.

Part Number	Material	Surface Treatment
OG-321605	Phosphor bronze for spring (t0.1mm)	Sn reflow plating (underlying Cu plating)

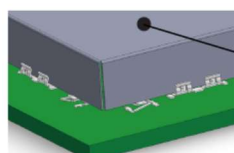


Properties

- Compression force vs electronic resistance.



Application



Shielding can