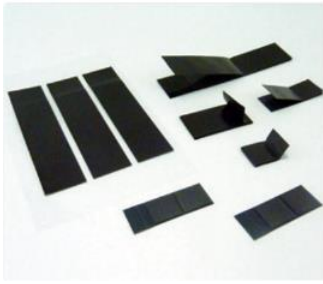


## FLEXIBLE FERRITE CORE

## Kitagawa series: FFPC



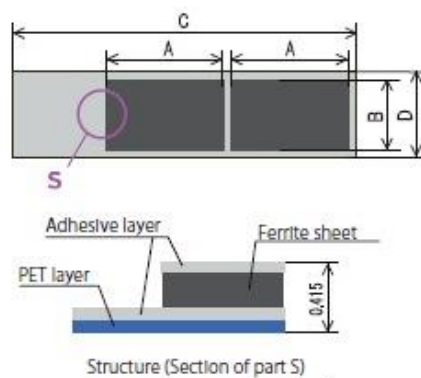
- Optimal EMC Solution for FPC and FFC.
- Sintered body and reduced thickness overcome the rigid and brittle nature of standard ferrite core.
- Higher insertion loss in low frequencies compared to standard EMI absorbers.
- Excellent noise suppression.
- Available in sheet form.

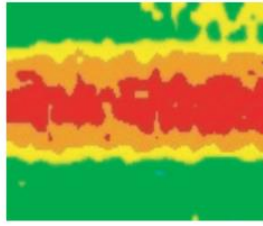
[Ferrite Selection Guide](#)
[Fitting Instructions](#)

- Material:** - PET with adhesive layer  
 - Ferrite sheet  
 - Double-sided adhesive tape

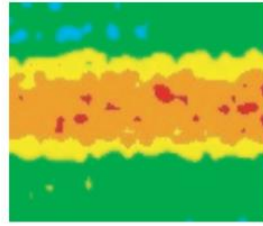
Part Number	A	B	C	D	Applicable cable width
FFPC-0.3-10-5	10	5	32.5	6.5	10
FFPC-0.3-10-10	10	10	30	11	10
FFPC-0.3-12-8	12	8	38.5	9.5	12
FFPC-0.3-14-14	14	14	38	15	14
FFPC-0.3-22-8	22	8	60.5	9.5	22
FFPC-0.3-22-14	22	14	54	15	15
FFPC-0.3-27-14	27	14	70.5	15.5	27
FFPC-0.3-44-14	44	14	98	15	44

Dimensions in mm

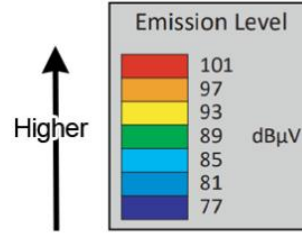




Metal filler EMC noise suppression sheet



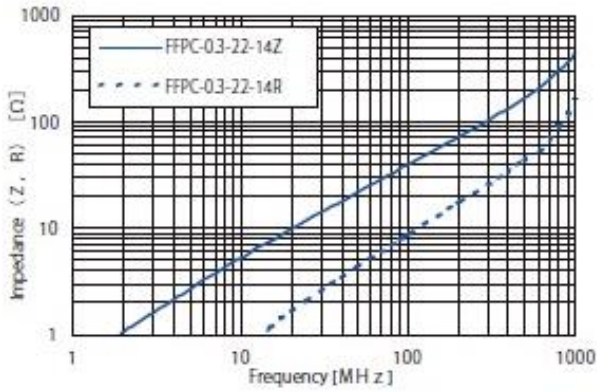
SMARTPLY



Higher ↑

Emission Level

### Impedance vs frequency properties



### Permeability

